

CÂMARA M. LOURES
APROVADO

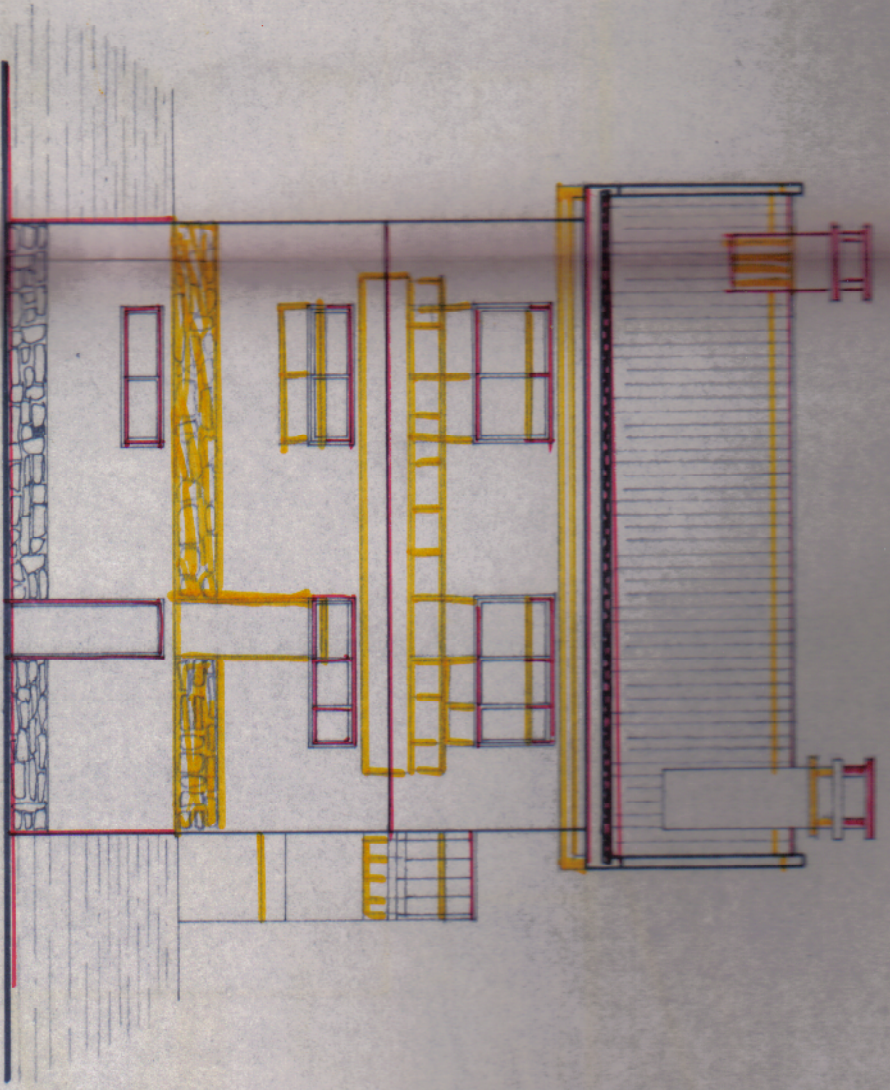
18.FEV.1988

Reunião de.....
O Presidente da Câmara

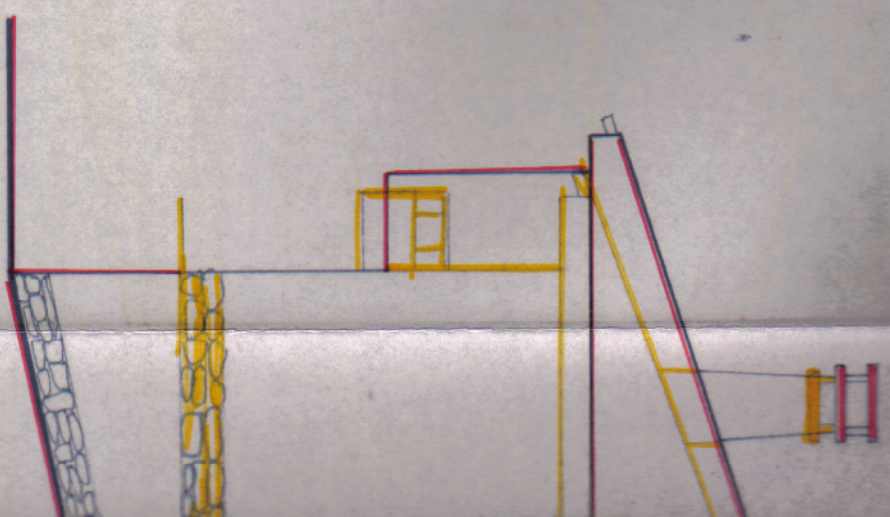
alçado lateral esquerdo

Handwritten signature and date:
1988

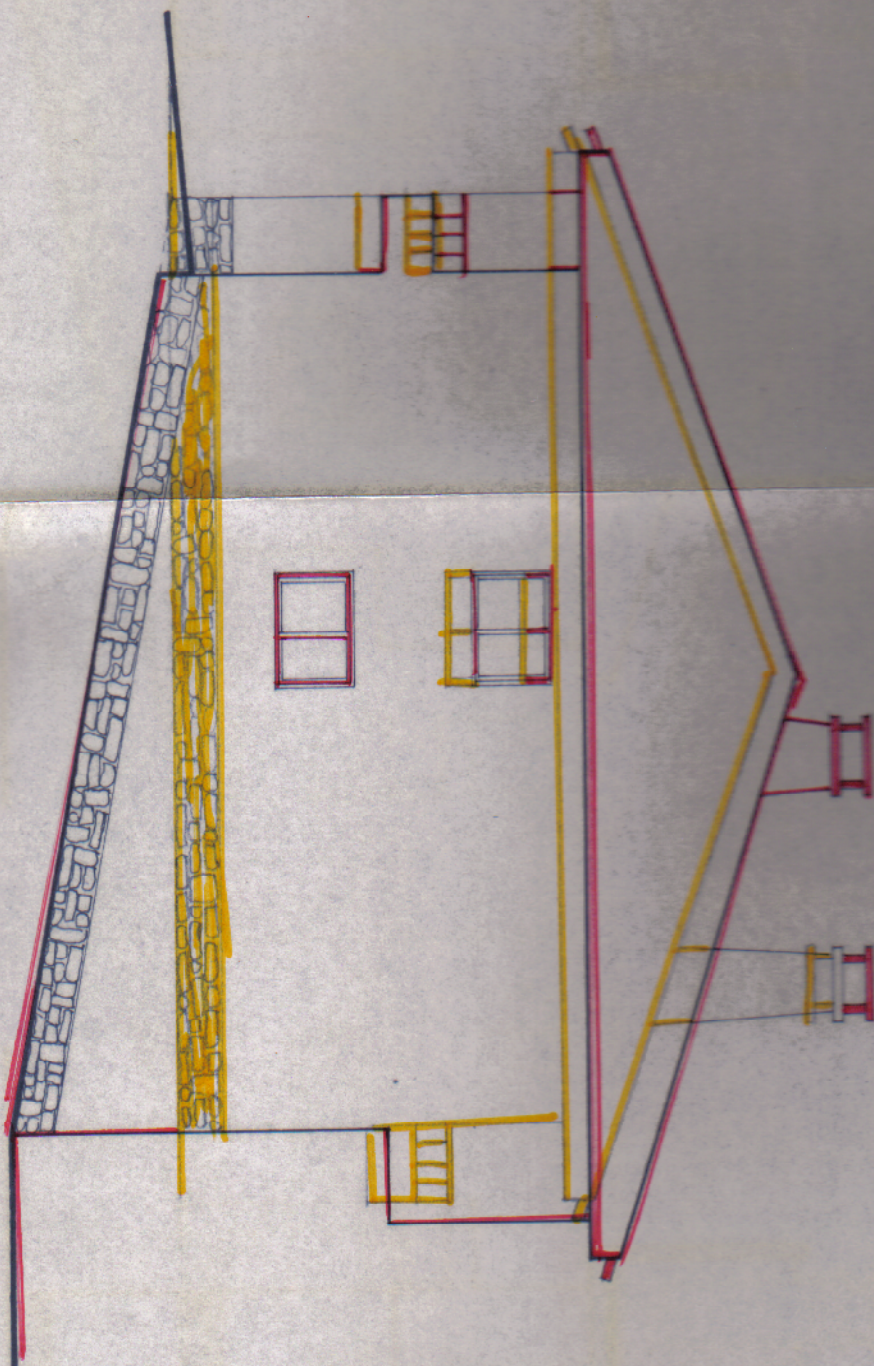
alçado posterior



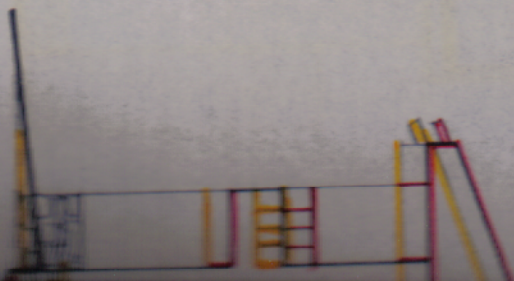
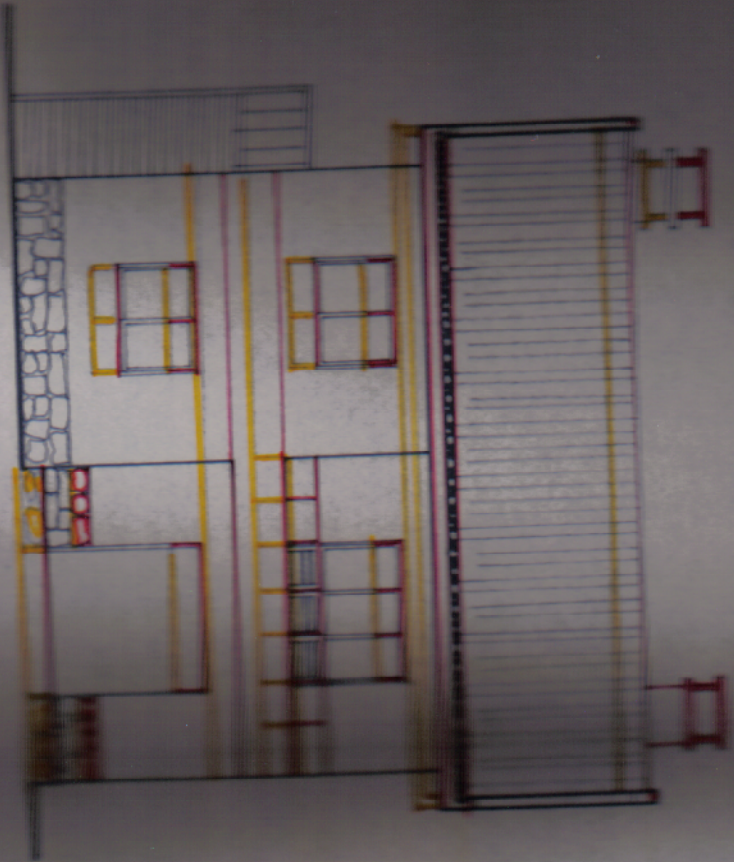
alçad



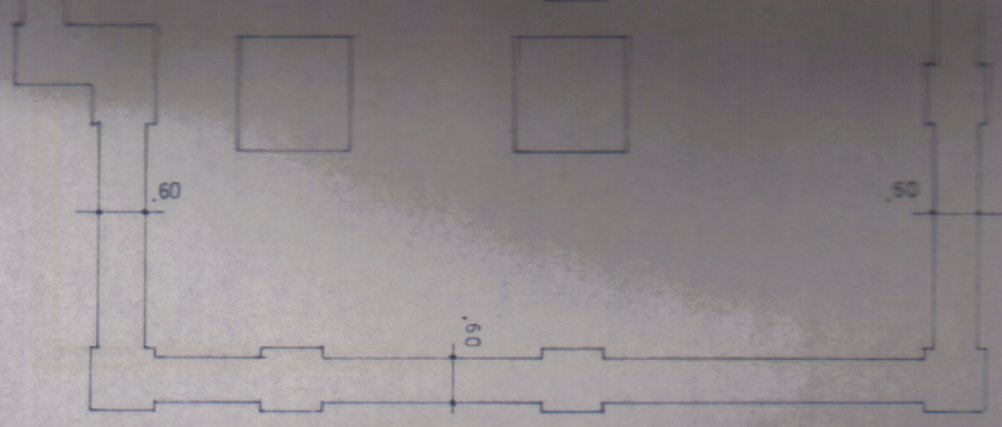
alçado lateral direito



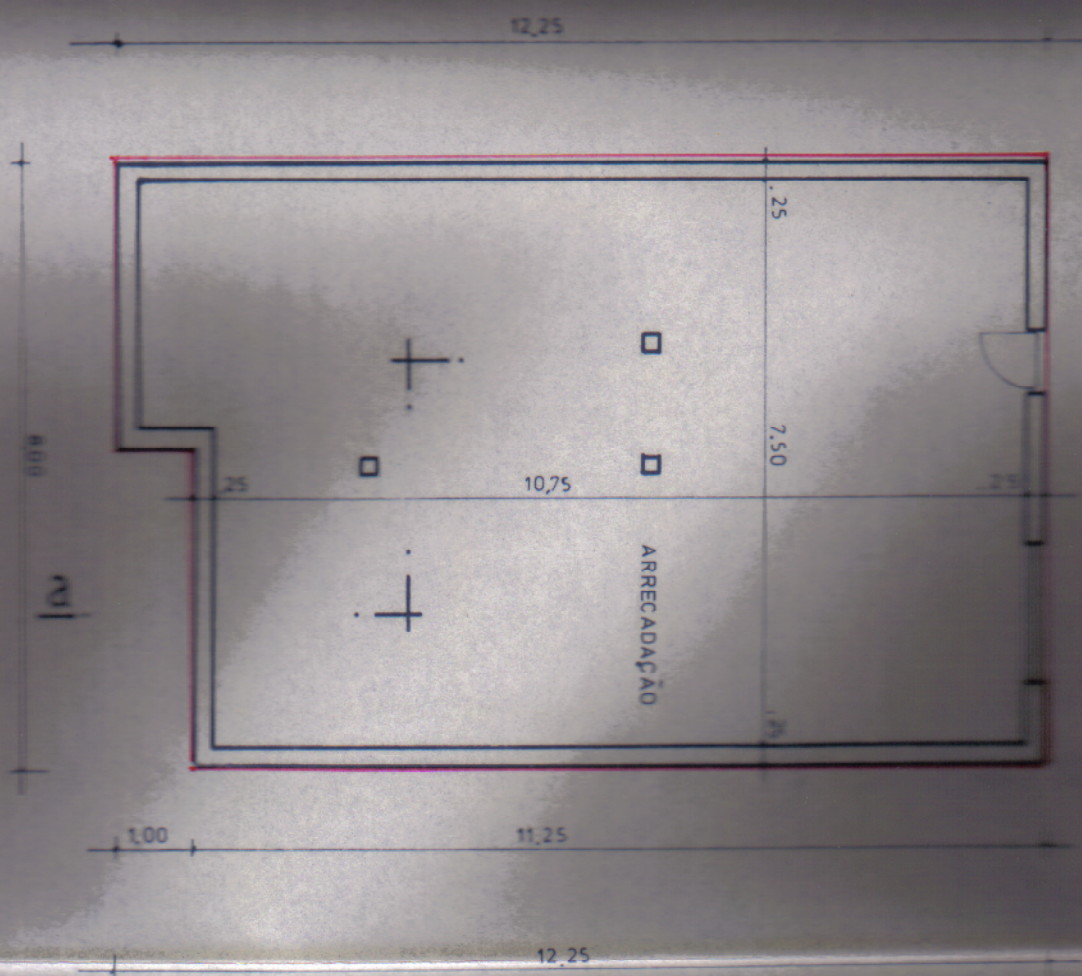
alçado principal



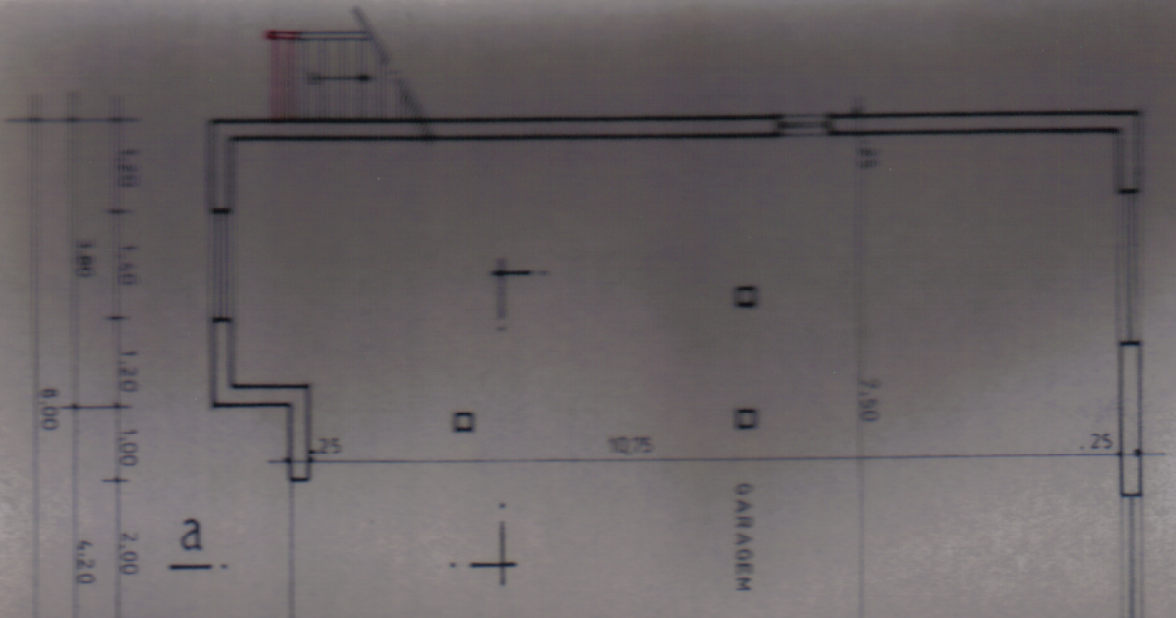
Andaques



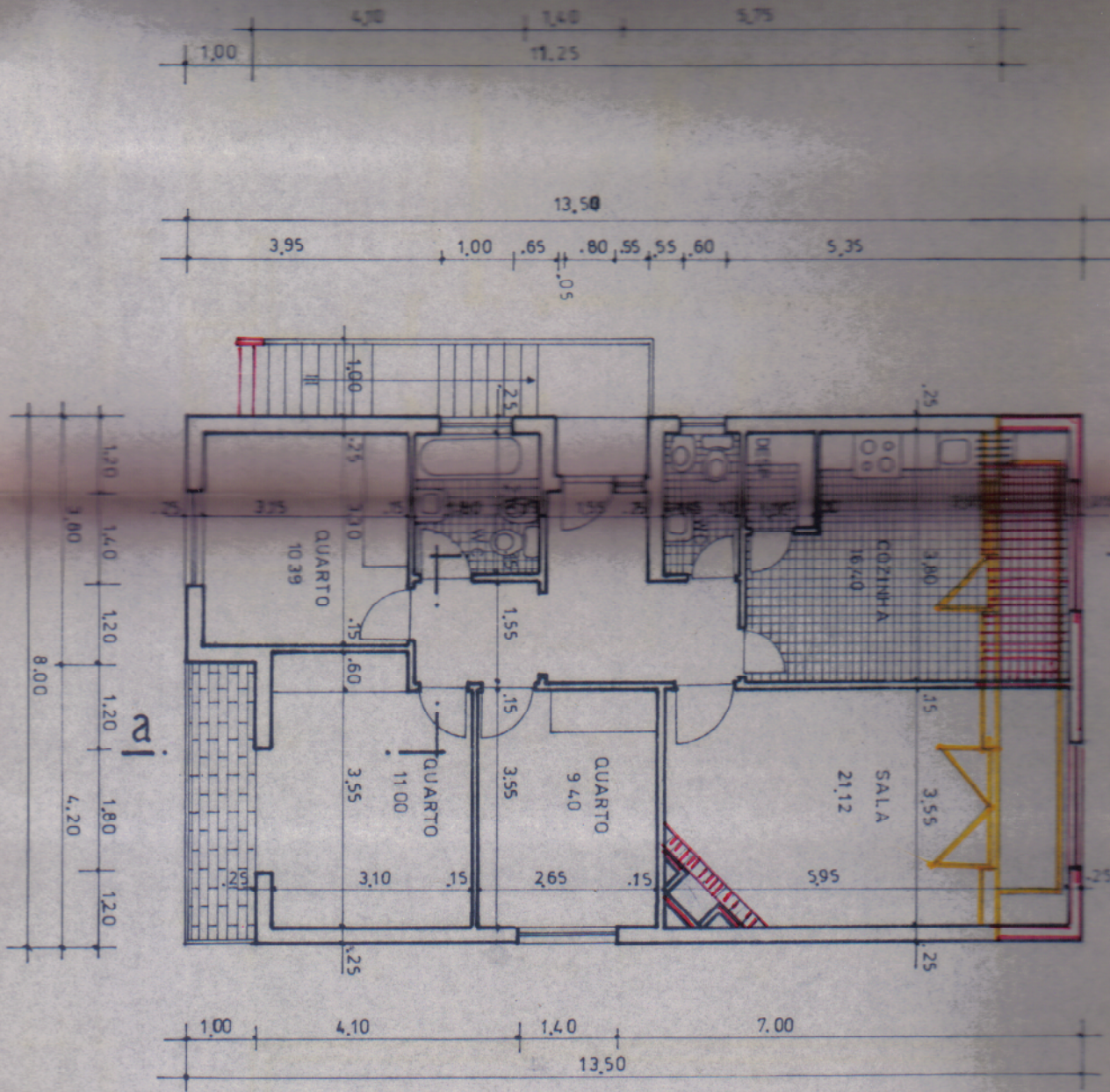
CAVÃO



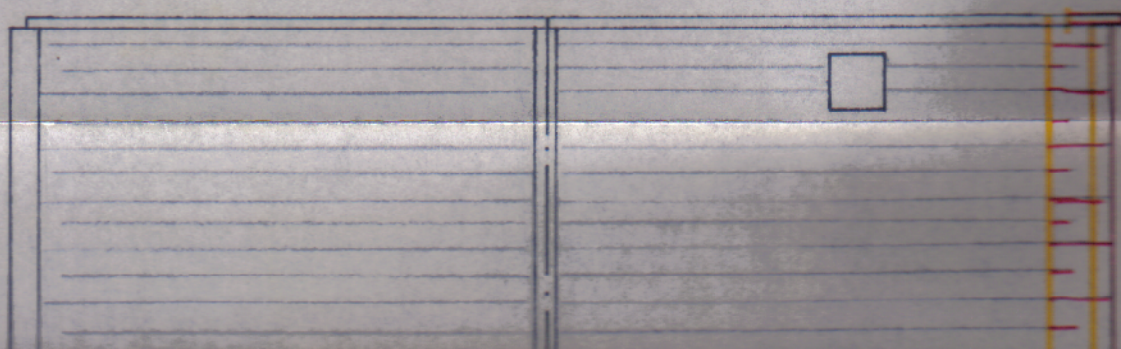
r / chão



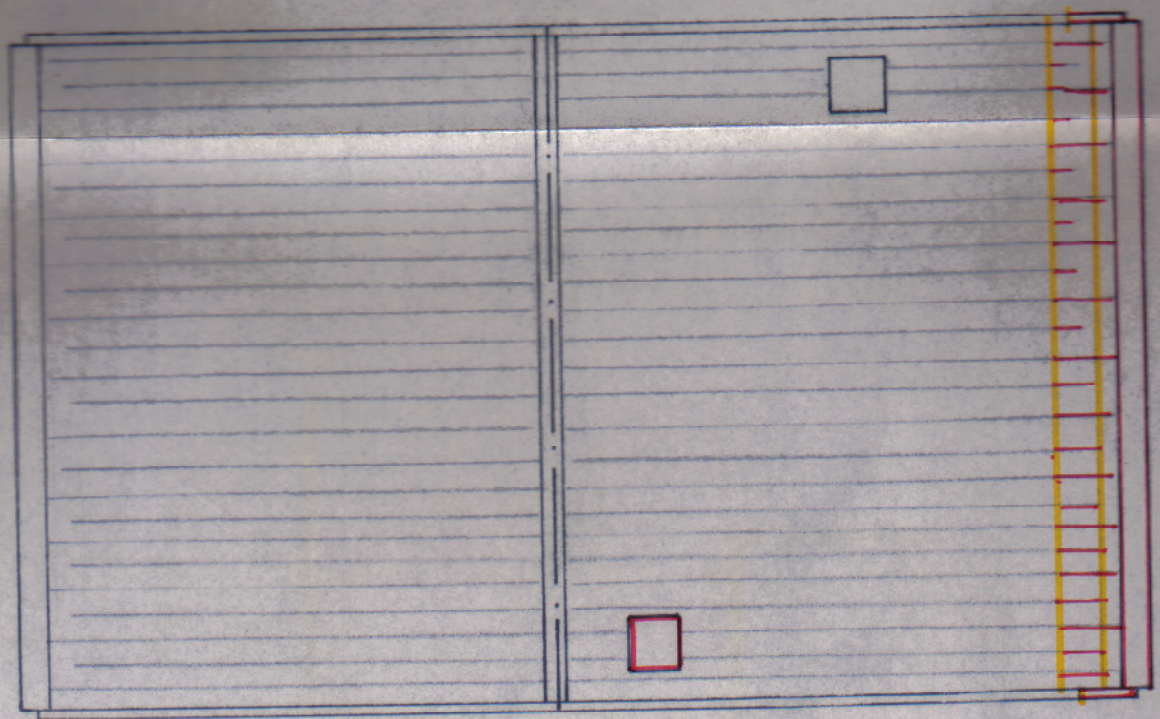
andar



cober



ENTRADA
24 JUN 1987



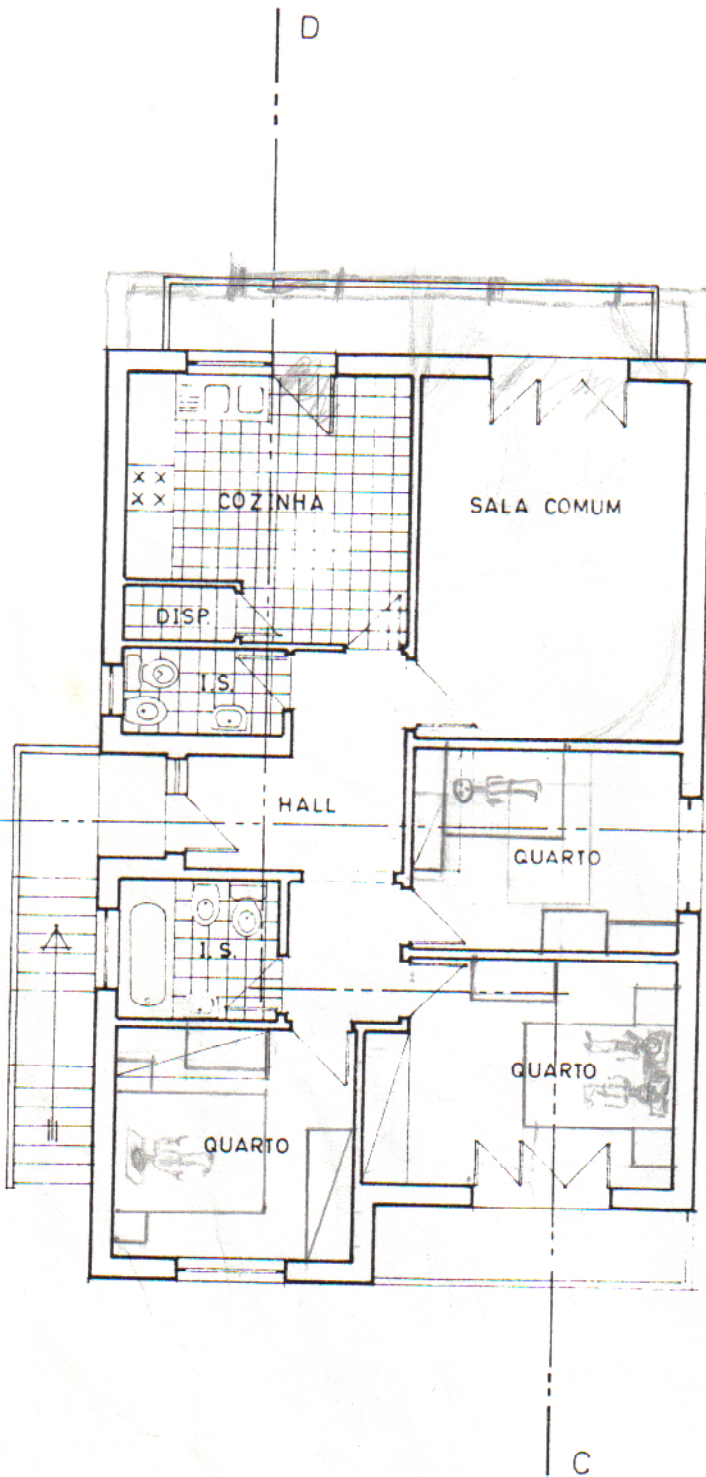
LAMARA M. LOURES
A. G. VAVADO

18.FEV.1988

Reuniao de.....
o Presidenta da Camara

cobertura

Handwritten signature
1988

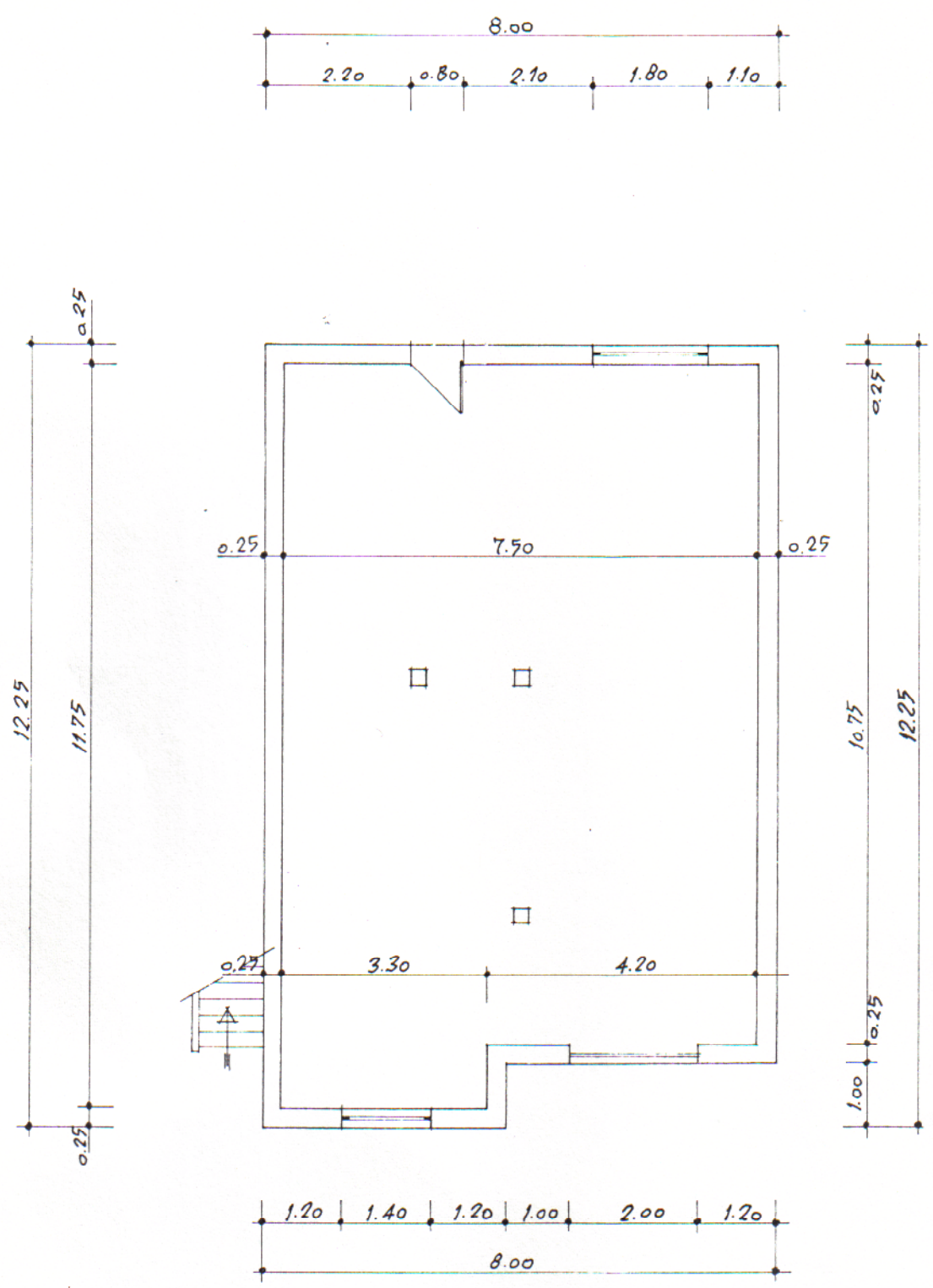


	B	
COZINHA	=	12.02 m ²
DISPENSA	=	1.05 m ²
SALA C.	=	16.69 m ²
QUARTO	=	9.41 m ²
QUARTO	=	12.30 m ²
QUARTO	=	10.40 m ²
I.S.	=	3.78 m ²
I.S.	=	2.42 m ²
C/R.C.	=	9.61 m ²
VARANDA	=	4.20 m ²
ÁREA BRUTA	=	93.80 m ²

A

PLANTA DO 1º ANDAR

4



PLANTA DO R/C